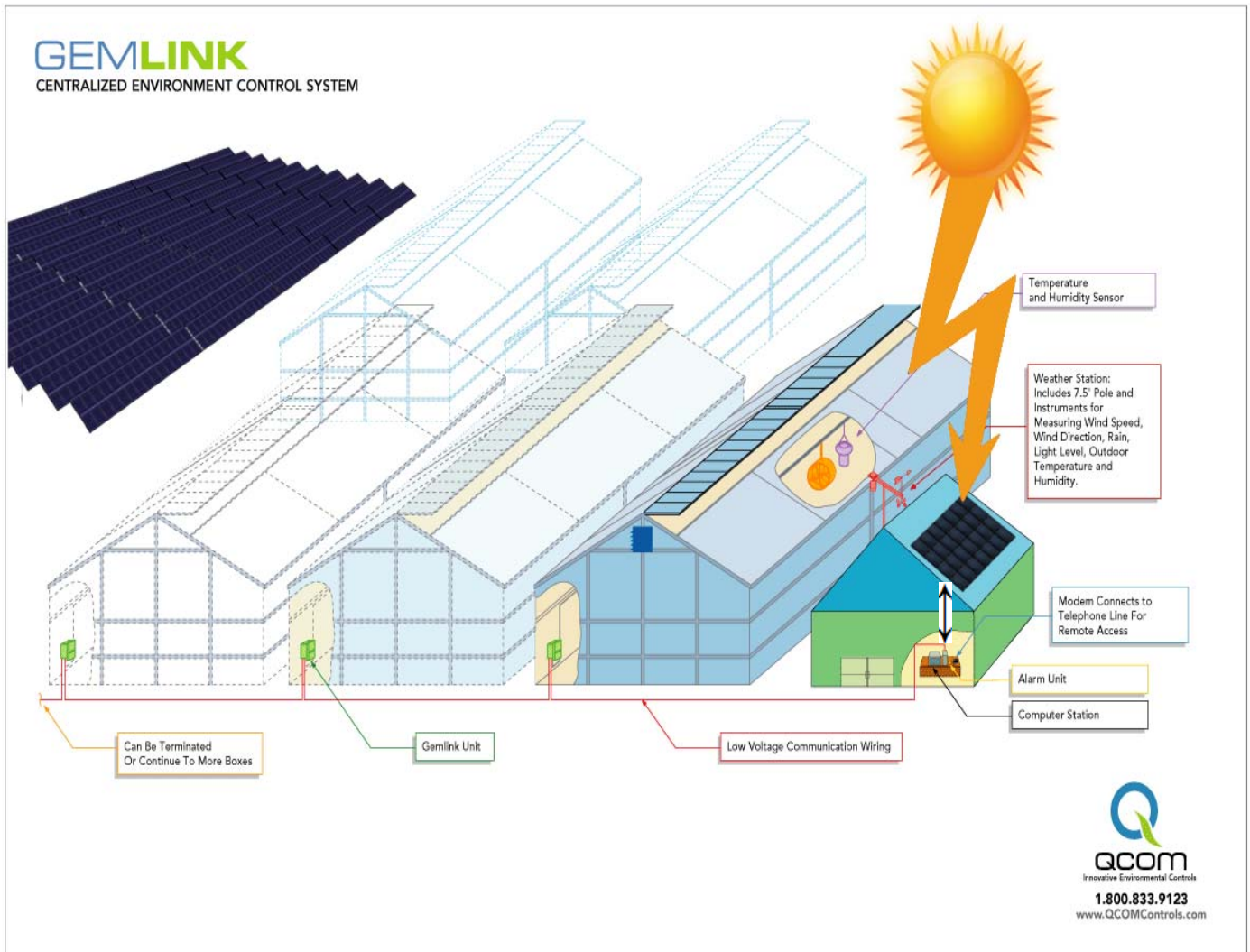


Q-Solar is the integration of the GEMLink Environmental Control System and Solar Power. The system provides on-going solar system performance monitoring data, all collected and stored through your existing QCOM system. You will be able to see on a real-time basis the power your solar system is generating. This feedback will give you the confidence to know that your system is performing at its highest level. Your QCOM system can be programmed to send alarms if the solar system is not performing to the original design criteria. The system will use the energy management program of GEMLink to schedule equipment operation during high energy demand and turn off certain designated devices during peak usage times.

NEW

Q-Solar



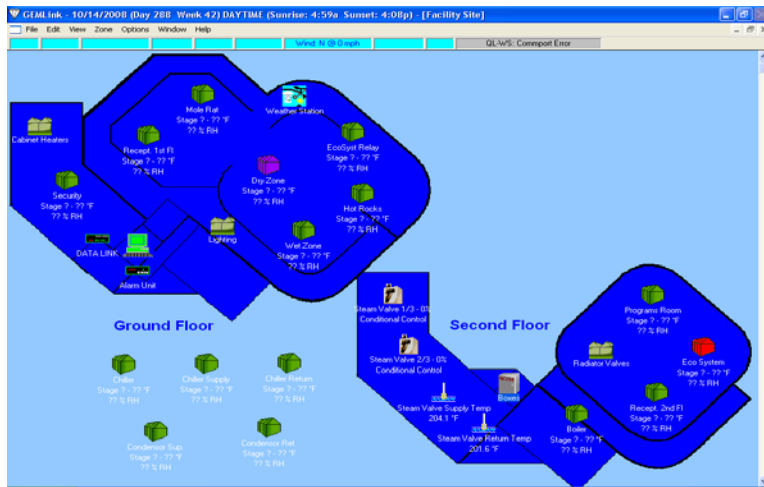
Solar Point
Energy Group

QCOM Controls
13 Orchard Road Ste 104
Lake Forest
California 92630
www.qcomcontrols.com



Tel: 800 833 9123
Fax: 949 833 1116
sales@qcomcontrols.com

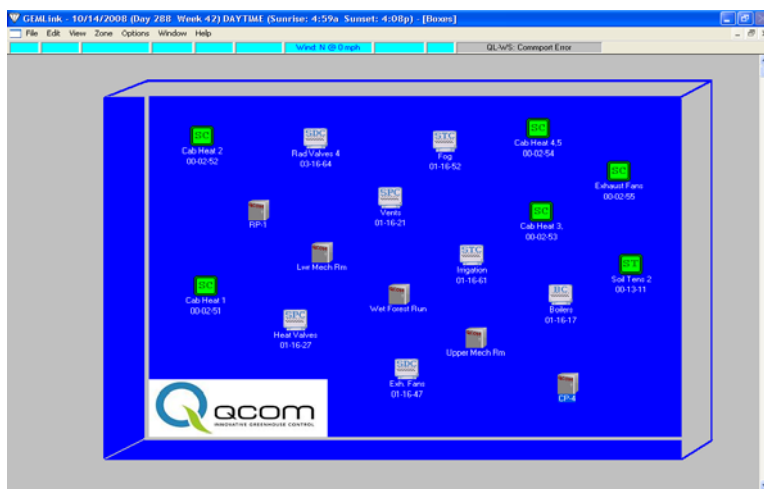
Q-Solar



Facility Summary



Zone Detail



Control Panel

Zone/Device Name	Type	Status	H7	H7	H6	H5	H4	H3	H2	H1	N.D.W	N.Night	C1	C2	C3	C4	C5	C6	C7	C8	DH1	DH2	DH3	
Sec 05-Boiler	On/Off Pump	ON	X	X	X	X	X	X	X	X														
Sec 05-Exhaust Stage 1	On/Off Fan	ON											X	X	X	X	X	X	X	X	X	X	X	na
Sec 05-Exhaust Stage 2	On/Off Fan	ON											X	X	X	X	X	X	X	X	X	X	X	na
Sec 05-Exhaust Stage 3	On/Off Fan	ON											X	X	X	X	X	X	X	X	X	X	X	na
Sec 05-Heat Fan D15	On/Off Fan	ON	X	X	X	X	X	X	X	X	X	X	X	X	X	X	X	X	X	X	X	X	X	na
Sec 05-Heat Fan D16	On/Off Fan	ON	X	X	X	X	X	X	X	X	X	X	X	X	X	X	X	X	X	X	X	X	X	na
Sec 05-Pad Pump	On/Off Pump	ON																						na
Sec 05-Pump Light/H4/H4	On/Off Pump	ON																						na
Sec 07-Heat Pump	On/Off Pump	ON	X	X	X	X	X	X	X	X	X	X	X	X	X	X	X	X	X	X	X	X	X	na
Sec 07-HDR12-AIR-7	On/Off Fan	ON	X	X	X	X	X	X	X	X	X	X	X	X	X	X	X	X	X	X	X	X	X	na
Sec 08-Heat Pump	On/Off Pump	ON	X	X	X	X	X	X	X	X	X	X	X	X	X	X	X	X	X	X	X	X	X	na
Sec 08-HDR12-AIR-8	On/Off Fan	ON	X	X	X	X	X	X	X	X	X	X	X	X	X	X	X	X	X	X	X	X	X	na
Sec 09-Mix	On/Off Fan	ON	X	X	X	X	X	X	X	X	X	X	X	X	X	X	X	X	X	X	X	X	X	na
Sec 09-HEAT PUMP-5	On/Off Pump	ON	X	X	X	X	X	X	X	X	X	X	X	X	X	X	X	X	X	X	X	X	X	na
Sec 09-LIGHTS SEC 9	On/Off Light	ON																						na
Sec 09-LIGHTS SEC 9	On/Off Light	ON																						na
Sec 09-LIGHTS SEC 9B1	On/Off Light	ON																						na
Sec 10-SEC 10 HEAT P.	On/Off Pump	ON	X	X	X	X	X	X	X	X	X	X	X	X	X	X	X	X	X	X	X	X	X	na
Sec 11-Heat Pump	On/Off Pump	ON	X	X	X	X	X	X	X	X	X	X	X	X	X	X	X	X	X	X	X	X	X	na
Sec 11-HAF Fans	On/Off Fan	ON	X	X	X	X	X	X	X	X	X	X	X	X	X	X	X	X	X	X	X	X	X	na
Sec 12-Heat Pump	On/Off Pump	ON	X	X	X	X	X	X	X	X	X	X	X	X	X	X	X	X	X	X	X	X	X	na
Sec 12-HAF Fans	On/Off Fan	ON	X	X	X	X	X	X	X	X	X	X	X	X	X	X	X	X	X	X	X	X	X	na
Sec 12-Swamp Cooler N.	On/Off Light	ON																						na
Sec 12-Swamp Cooler S.	On/Off Light	ON																						na
Sec 15-Bits Head On/Off	On/Off Pump	ON	X	X	X	X	X	X	X	X	X	X	X	X	X	X	X	X	X	X	X	X	X	na
Sec 15-Top Heat On/Off	On/Off Fan	ON	X	X	X	X	X	X	X	X	X	X	X	X	X	X	X	X	X	X	X	X	X	na
Sec 16-Heat HAF	On/Off Fan	ON	X	X	X	X	X	X	X	X	X	X	X	X	X	X	X	X	X	X	X	X	X	na
Sec 16-Heat Heat Pump	On/Off Pump	ON	X	X	X	X	X	X	X	X	X	X	X	X	X	X	X	X	X	X	X	X	X	na
Sec 17-Heat HAF	On/Off Fan	ON	X	X	X	X	X	X	X	X	X	X	X	X	X	X	X	X	X	X	X	X	X	na
Sec 17-Heat Heat Pump	On/Off Pump	ON	X	X	X	X	X	X	X	X	X	X	X	X	X	X	X	X	X	X	X	X	X	na
Sec 18-Heat HAF	On/Off Fan	ON	X	X	X	X	X	X	X	X	X	X	X	X	X	X	X	X	X	X	X	X	X	na
Sec 18-Heat Heat Pump	On/Off Pump	ON	X	X	X	X	X	X	X	X	X	X	X	X	X	X	X	X	X	X	X	X	X	na
Sec 19-Heat HAF	On/Off Fan	ON	X	X	X	X	X	X	X	X	X	X	X	X	X	X	X	X	X	X	X	X	X	na
Sec 19-Heat Heat Pump	On/Off Pump	ON	X	X	X	X	X	X	X	X	X	X	X	X	X	X	X	X	X	X	X	X	X	na

Device Summary

The power management program in GEMLink allows the user to setup weekday, weekend and holiday schedules for devices to conserve energy based on time of the day and overall power usage. When user programmable limits are reached, the system will turn off devices based on priority and environment control requirements. Integrated with your Solar System, GEMLink will allow you to optimize your energy consumption, resulting in long term savings.

Never before have the financial incentives for solar power been so available and attractive. In addition to subsidies at the Federal level, virtually every State and utility offer some form of financial incentives to promote continued growth of solar system installations. In many cases, these incentives can cover in excess of 50% of the original system cost in the first year. These incentives, coupled with the long term management and control of your energy costs, make solar a solid and profitable financial investment. QCOM Controls and Solar Point Energy Group are committed to making certain that all applicable incentives are utilized as part of the financial structure of your solar system.

QCOM Controls
 13 Orchard Road Ste 13
 Lake Forest
 California 92630
www.qcomcontrols.com



Solar Point
 Energy Group

Tel: 800 833 9123
 Fax: 949 833 1116
sales@qcomcontrols.com